

2017 Product Overview

1967 1977 1987 1997 2007 2017

LANCER
ORTHODONTICS



EST. 1967

50th
Anniversary

Celebrating 50 years
of quality orthodontic
products and service!

LANCERTM

ORTHODONTICS



Building upon more than fifty years of success as a trusted provider of affordable, high quality orthodontic products around the world.

For more than a half-century, Lancer Orthodontics has been a trusted leader in the field of designing, manufacturing and distributing orthodontic appliances and accessories.

Utilizing the latest design and manufacturing technologies, our team of skilled and experienced technicians has created a contemporary line of high-quality, affordable orthodontic appliances and accessories that are admired by doctors worldwide, and loved by the thousands of patients who have benefited from their use.

Lancer Orthodontics is fully committed to providing unparalleled customer care to each member of our global client network. As such, we take great pride in knowing that each of our customers, whether a small clinic or a major worldwide distributor, receive a level of personalized attention that will ensure their ultimate satisfaction. In doing so, we continue to build new relationships around the world while fostering our reputation as a trusted and reliable source for quality orthodontic appliances.

Our product line includes a full spectrum of orthodontic products and accessories necessary for successful treatments, including brackets, bands, buccal tubes, wires, elastomerics, extra-oral appliances and hand instruments. Each of our products is manufactured under a quality management system that is certified to the latest applicable domestic and international laws and regulations, giving our customers the assurance that they receive products that are of consistently high quality, with increased assurances that their individual needs and expectations will be met.

Those who choose Lancer Orthodontics as their trusted supplier of orthodontic appliances and accessories benefit from more than 50 years of research, development and manufacturing innovations that have resulted in the products they use on a daily basis to produce beautiful smiles in children and adults alike. Choose Lancer, and experience a truly unique partner that is fully committed to your ultimate success.

1967

1997



FM 78272

Contents

Metal Brackets.....	4
Self-Ligating Brackets	6
Aesthetics.....	7
Redi-Pak™.....	8
Retention	9
Tubes, Bands & Assemblies.....	10
Wire Products.....	12
Elastomerics	14
Adhesives	16
Pliers.....	18
Expanders	20
Miniscrews	21
Information.....	22
Manufacturing	23

2007

2017

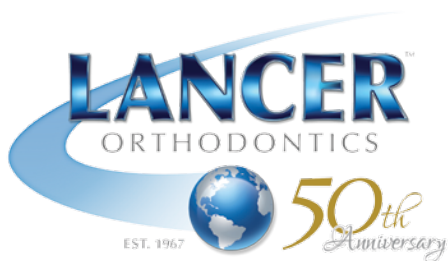


American
Association of
Orthodontists®



Registration Number 2020397





Spectrum

Designed for a fast start and optimum finish, Lancer's Spectrum brackets feature four slots for a variety of treatment options: two wing slots, a straight wire slot, and a vertical slot, making this perhaps the most versatile bracket available today. Spectrum makes it possible to start treatment quickly using tipping and translation techniques with low forces. The built-in straight-wire techniques can then be used to help achieve a precision finish with less effort. An effective straight-wire bracket with advanced clinical capacity, Spectrum lets you decide which mechanics your patients need.

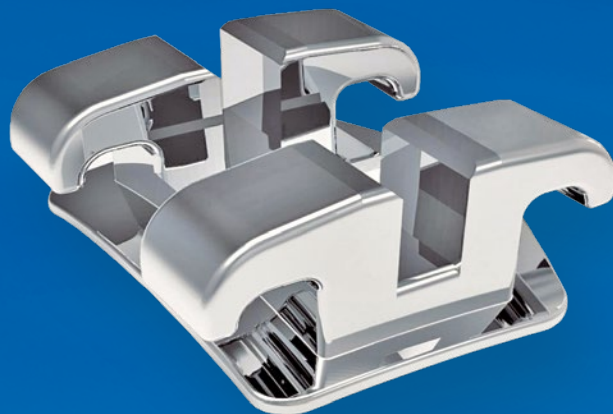


This bracket produces excellent results by allowing the advantages of many treatment techniques to be combined.

- Unique wing slot configurations facilitate rapid, non-binding movements in the initial phases of treatment, using minimal force
- Vertical slot design facilitates engagement, and readily accepts auxiliaries for securing archwires. It also accepts springs, posts, and classic hooks
- Archwires may be secured with pins, ligature ties, wires or springs
- Predetermined in/out relationships, built-in torque and angulation, and your choice of .018 or .022 straight-wire slots
- Available in Roth and Andrews prescriptions

Spectrum Redi-Pak	
0.018	250-931
0.022	250-932

Metal Brackets



Mini-Twin

Our Mini-Twin bracket combines the strength you need with the fortitude to handle the toughest cases. The Mini-Twin is big on performance.

Features include: deep tie-wing undercuts for easy ligation, accurate slot tolerances, and precision design. Integral hooks, 80-gauge mesh.

Velocity Mini Twin (Card) HK345		
	Roth	MBT
0.018	20RC-345-18	20MC-345-18
0.022	20RC-345-22	20MC-345-22



Sinterline V-Slot

Lancer's signature Sinterline Plus bracket system is available with a vertical V-Slot for added flexibility.

Praxis 2.0 Mini-Twin

A perfect combination of robotic MIM technology, superior design, and pleasing aesthetics, producing a robust bracket that is inherently stronger and more dimensionally accurate than similar brackets. This powerful, functionally superior bracket is loaded with features that patients and doctors love.

- Rhomboidal shape, anatomically designed base, and scribe line which runs through both the bracket and the pad facilitate fast and accurate placement
- Slots are milled with diamond blades, guaranteeing precise dimensions throughout the wall of the slot
- Torque-in-base allows for less wire bends and fewer brackets being repositioned
- Low-profile design for optimum patient comfort
- Large under tie wing area for easy ligation
- Improved pad anatomy on the cuspids and bicuspid with mesial and distal anti-rotations
- Anatomically designed 80-gauge mesh pads make bonding effortless while ensuring optimal adhesion



Praxis 2.0 Mini Twin HK345

	Roth Redi-Pak	MBT Redi-Pak
0.018	265-933	268-931
0.022	265-934	268-932



Sinterline Plus

Lancer's Sinterline Plus bracket system stands out among the world's best.

- Patented trapezoid shape that mirrors the shape of the tooth for easy placement, maximum functionality, and ultimate patient comfort
- All the benefits of a straight wire appliance
- The height of Sinterline Plus is similar to a mini twin bracket, while the width is closer to that of a standard size bracket
- Compound contour base, torque-in-base, and compensating in/out dimensions
- Extra generous tie-wing undercuts designed for double-tying
- Two-piece bracket with an anatomically designed 80-gauge mesh pad for maximum retention and easy removal
- Available with a vertical slot for a variety of treatment options

Sinterline Plus & V-Slot HK345

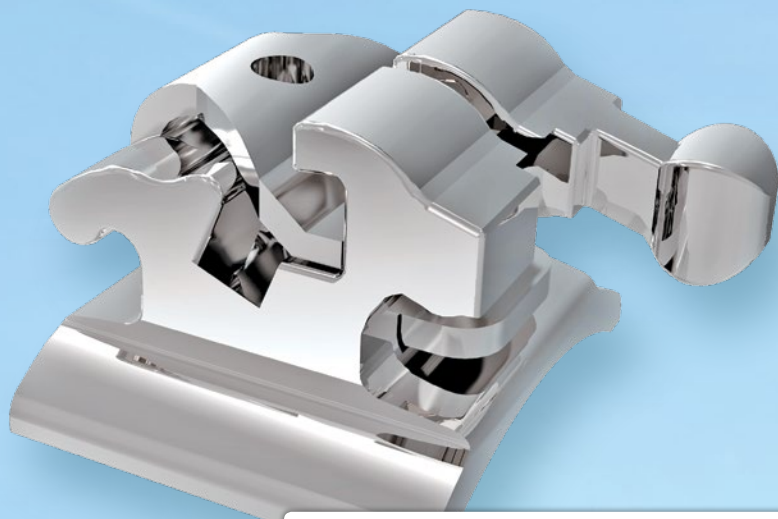
	Sinterline Redi-Pak	V-Slot Redi-Pak
0.018	233-931	249-931
0.022	233-932	249-932

Try our Sinterline Plus bracket system today and enjoy all the benefits of a straight wire appliance with a unique, patented shape for maximum functionality, ease-of-use, and patient comfort.

Self-Ligating Brackets

Active SLB

Next generation Active SLB, with a robust NiTi clip that will seat the larger wires in the bottom of the slot, where they belong. Proven engineering to meet the demands of all cases. Patient comfort realized, with a high retention base.



Velocity Active SLB HK345		
	Roth	MBT
0.018	23RK-345-18	23RK-345-18
0.022	23RK-345-22	23RK-345-22

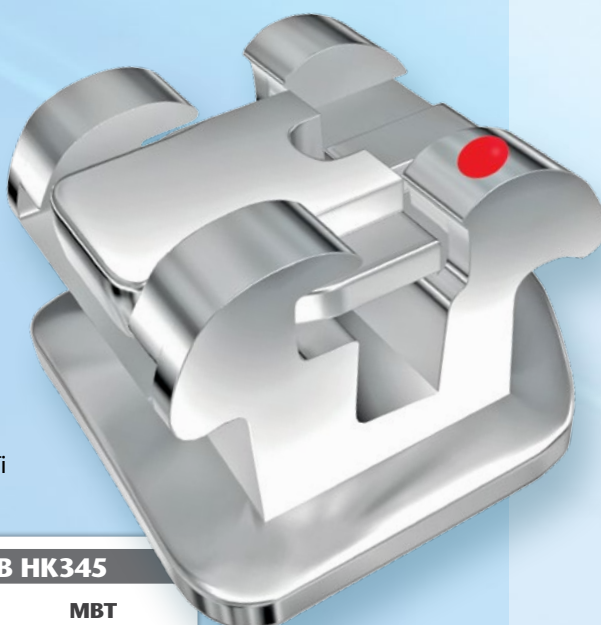


Active SLB Ceramic

Next generation ceramic Active SLB. Same robust NiTi clip as its all-metal partner with the added bonus of high density, super strong ceramic construction. Due to the same in/out relationship to the all metal design, cases can be combined easily. Mechanical locking base.

Passive SLB

All the advantages of a classic twin design with the benefit of Passive SLB techniques. Achieve quick leveling and aligning, treatment and finish to the demanding criteria you expect. NiTi clip, secure locking mechanism.



Velocity Passive SLB HK345		
	Roth	MBT
0.018	21RK-345-18	21MK-345-18
0.022	21RK-345-22	21MK-345-22

Velocity Active SLB Ceramic HK345	
Roth	
0.018	24RK-345-18
0.022	24RK-345-22
MBT	
0.018	24MK-345-18
0.022	24MK-345-22

Aesthetics

Optyc Ceramic

Lancer's Optyc aesthetic brackets are known for their Chameleon Effect, where the premium quality polycrystalline cultured alumina from which they are manufactured allows the brackets to blend with the tooth color. Precisely engineered and manufactured with an emphasis on performance and accuracy, Lancer's Optyc ceramic brackets exhibit maximum strength and shape integrity while maintaining a totally aesthetic appearance throughout treatment.

With added new features and an improved classic design, Optyc offers a great choice in aesthetics for your patients.



- Rhomboidal shape for easy placement
- Unique bonding base is enhanced with mechanical undercuts for a secure bond and easy debonding
- Smooth, contoured tie-wings for maximum patient comfort and mechanical functionality

OPTYC HK345

Roth Redi-Pak

MBT Redi-Pak

0.018

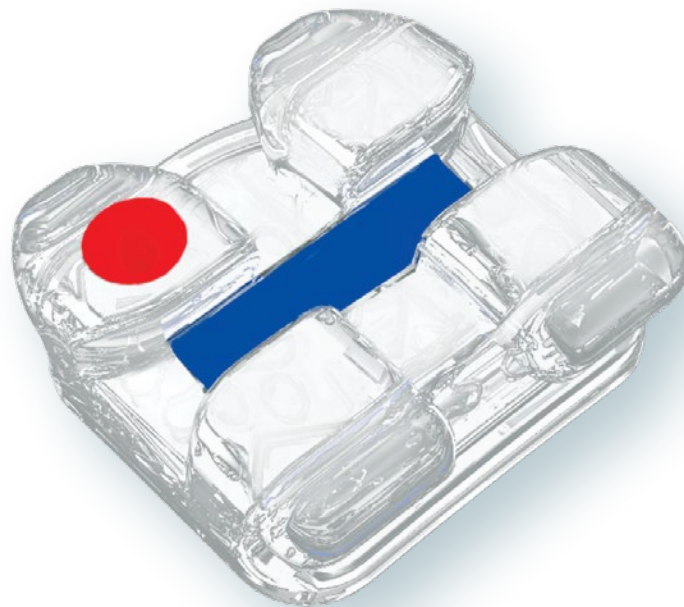
246-941

231-941

0.022

246-942

231-942



Velocity™ Whisper

Velocity Whisper is a pleasingly translucent, stain resistant bracket that gives off no glare and is designed for unparalleled strength, maximum patient comfort and perfect treatment results. Velocity Whisper is the pinnacle of aesthetic versatility, strength and performance.

- Ultra smooth surface, contoured base, smooth tie wings and hooks, and rounded corners for ultimate patient comfort
- Mechanical, ultra-hold base design for reliable bonding and consistent debonding
- Blue colored wire slot aids in bracket placement
- Ample tie wing space for fast and easy ligation

Velocity Whisper HK345

Roth Redi-Pak

MBT Redi-Pak

0.018

25RK-345-18

25MK-345-18

0.022

25RK-345-22

25MK-345-22

LANCER
ORTHODONTICS



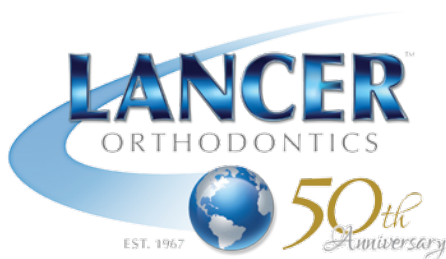
50th
Anniversary

EST. 1967

(800) 854-2896

www.lancerortho.com

Products shown are a small sample of our full lines. Contact us to find the items you need.



Redi-Pak™



Enhanced Patient Presentation

Redi-Pak allows you to store your brackets in a sealed package until your patients are ready for bonding. The brackets are mounted on FDA approved adhesive transfer tape while the base remains free from any residue. This keeps your brackets in "tweezer ready" position.



Redi-Pak allows you to better organize your upcoming bonding appointments by providing a place for you to mark your patient's name and bonding date.

Once opened, Redi-Pak is unfolded and can be secured next to your treatment chair.

If all brackets aren't bonded during the first appointment, Redi-Pak can be resealed and placed with your patient's chart.

Redi-Pak™ Prescription Kit

The Time-Saving Bracket Inventory Management Solution!

Redi-Pak™ is Lancer's innovative and sensible solution to better bracket storage and patient delivery. Redi-Pak keeps your brackets in individualized, pre-set sealed storage envelopes ready for bonding.



Ease of Ordering and Cost Control

Redi-Pak comes in a variety of prescriptions. The Redi-Pak system allows you to plan your bonding needs in a shorter period of time. This means fewer mix-ups, cross-contamination of parts, waste and costs.

Retention



SplinxTM Retainer

Permanent Retention made Easy!

- Suitable for all types of retention and splinting both upper and lower
- Made from a flattened woven wire coaxial (6 wires) for an easier adherence to tooth surface without slipping
- Completely passive, easily shaped and with no memory residual strength
- Compatible with all stickers
- Wire Length: 8" (20.4 cm); Wire Thickness: 0.25 mm; Wire Height: 0.69 mm
- Pack of 8 wires (1.63 meters total)

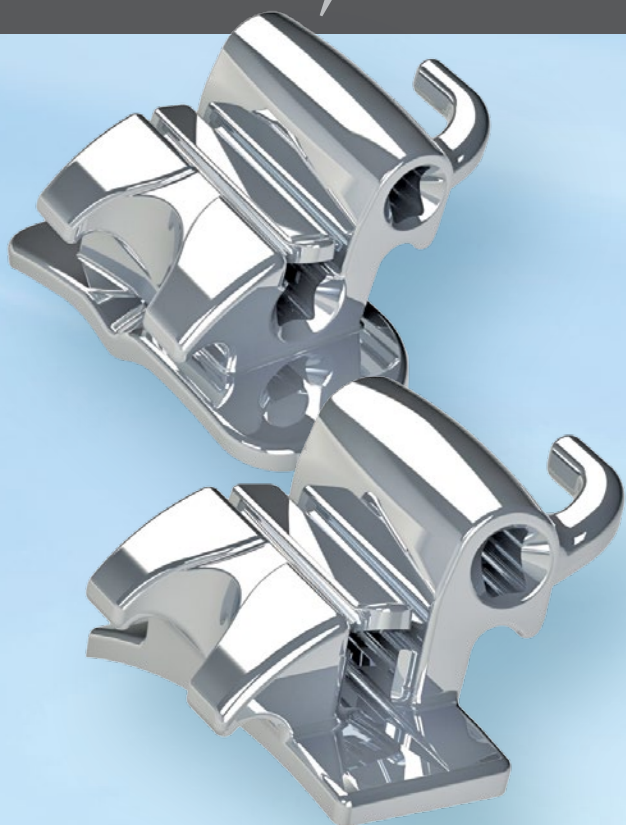
Splinx Retainer (pack of 8)

0.018

550-120

Products shown are a small sample of our full lines. Contact Lancer at 800-854-2896 to find the items you need today.

Tubes, Bands & Assemblies



Double Convertible Buccal Tube

Latest design. MIM technology. Integrated molded cap ensures conversion only when clinically removed.

Bondable and Weldable – Available in Roth and MBT Rx's, .018 and .022 with auxiliary .018 x .025 tube.

Velocity Double Conv. Buccal Tubes - 3.6mm M/D

Rx	T	DO		0.018	0.022
MBT	14°	10°	UR	3DL8-DC01	3DL2-DC01
	14°	10°	UL	3DL8-DC02	3DL2-DC02
Roth	10°	8°	UR	3DL8-DC05	3DL2-DC05
	10°	8°	UL	3DL8-DC06	3DL2-DC06
	25°	5°	LR	3DL8-DC07	3DL2-DC07
	25°	5°	LL	3DL8-DC08	3DL2-DC08

Velocity Single Buccal Tube

Newest design of an extremely low-profile buccal tube. Patient comfort and clinical effectiveness are the results this tube achieves. Funneled entrance, occlusal/gingival positioning guides, distal notch for additional ligation. 4.2mm.



Velocity Single Buccal Tubes - 4.3mm M/D

Rx	T	DO		Long - Bondable		Short - Bondable		Weldable	
				0.018	0.022	0.018	0.022	0.018	0.022
MBT	14°	10°	UR	3DL8-SN01	3DL2-SN01	3DS8-SN01	3DS2-SN01	3W8-SN01	3W2-SN01
	14°	10°	UL	3DL8-SN02	3DL2-SN02	3DS8-SN02	3DS2-SN02	3W8-SN02	3W2-SN02
	20°	0°	LR	3DL8-SN03	3DL2-SN03	3DS8-SN03	3DS2-SN03	3W8-SN03	3W2-SN03
	20°	0°	LL	3DL8-SN04	3DL2-SN04	3DS8-SN04	3DS2-SN04	3W8-SN04	3W2-SN04
Roth	10°	8°	UR	3DL8-SN05	3DL2-SN05	3DS8-SN05	3DS2-SN05	3W8-SN05	3W2-SN05
	10°	8°	UL	3DL8-SN06	3DL2-SN06	3DS8-SN06	3DS2-SN06	3W8-SN06	3W2-SN06
	25°	5°	LR	3DL8-SN07	3DL2-SN07	3DS8-SN07	3DS2-SN07	3W8-SN07	3W2-SN07
	25°	5°	LL	3DL8-SN08	3DL2-SN08	3DS8-SN08	3DS2-SN08	3W8-SN08	3W2-SN08



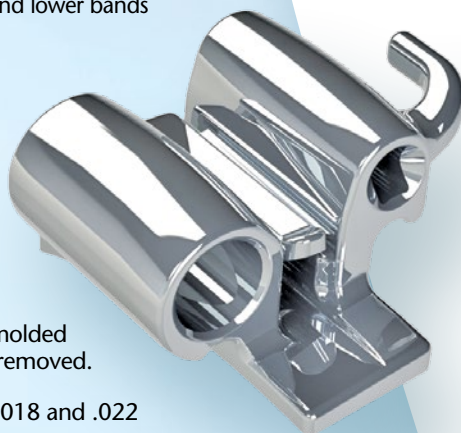
Micro-Etched Molar Band Assemblies

- Precision-shaped tooth anatomy for a tight, secure fit with excellent retention. Our distinct right and left anatomy is completely proportioned in all planes and for each band size
- Stainless steel that exhibits properties of "hardness" for strength to avoid wall collapse when fitting, yet is malleable enough for "snap" fitting that requires little or no burnishing
- Increased buccal height for greater flexibility in the placement and positioning of buccal tubes and lingual attachments
- Interiors are micro-etched to provide a rough surface for increased bond strength
- Permanently etched using an Electro Chemical Etching process for easy permanent identification
- 36 upper and lower sizes graduated in even, closely spaced increments for improved fit
- * Ask about our full range of bicuspid upper and lower bands

Triple Convertible Buccal Tube

Latest design. MIM technology. Integrated molded cap ensures conversion only when clinically removed.

Weldable – Available in Roth and MBT Rx's, .018 and .022



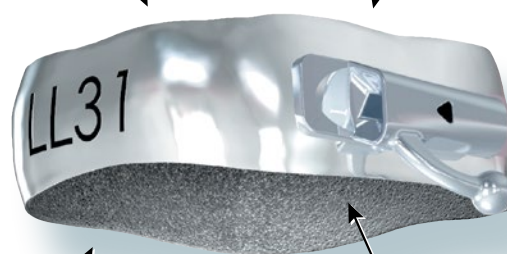
Whether you are upgrading from your current band system or are just starting out, Lancer has a band system to meet your specifications.

ROLLED EDGES
mean no sharp edges for maximum patient comfort

ANATOMICALLY CONTOURED
for fast placement and accurate fit

IDEALLY TEMPERED
for easy contouring

MICRO ETCHED INTERIOR SURFACE
ensures maximum retention



Manufactured under stringent quality control measures, you can count on Lancer's Band Systems to meet the demands of your orthodontic practice.

Velocity Triple Conv. Buccal Tubes - 3.5mm M/D - Weldable

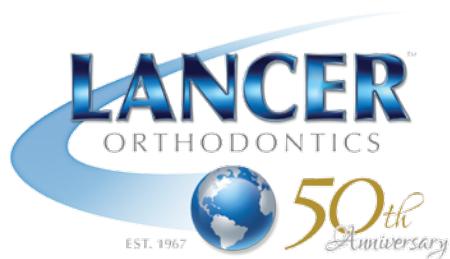
Rx	HGO	T	DO		0.018	0.022
MBT	0.045	14°	10°	UR	3W8-TC01	3W2-TC01
	0.045	14°	10°	UL	3W8-TC02	3W2-TC02
	0.051	14°	10°	UR	3W8-TC11	3W2-TC11
	0.051	14°	10°	UL	3W8-TC12	3W2-TC12
Roth	0.045	10°	8°	UR	3W8-TC05	3W2-TC05
	0.045	10°	8°	UL	3W8-TC06	3W2-TC06
	0.051	10°	8°	UR	3W8-TC15	3W2-TC15
	0.051	10°	8°	UL	3W8-TC16	3W2-TC16



(800) 854-2896
www.lancerortho.com

Products shown are a small sample of our full lines. Contact us to find the items you need.

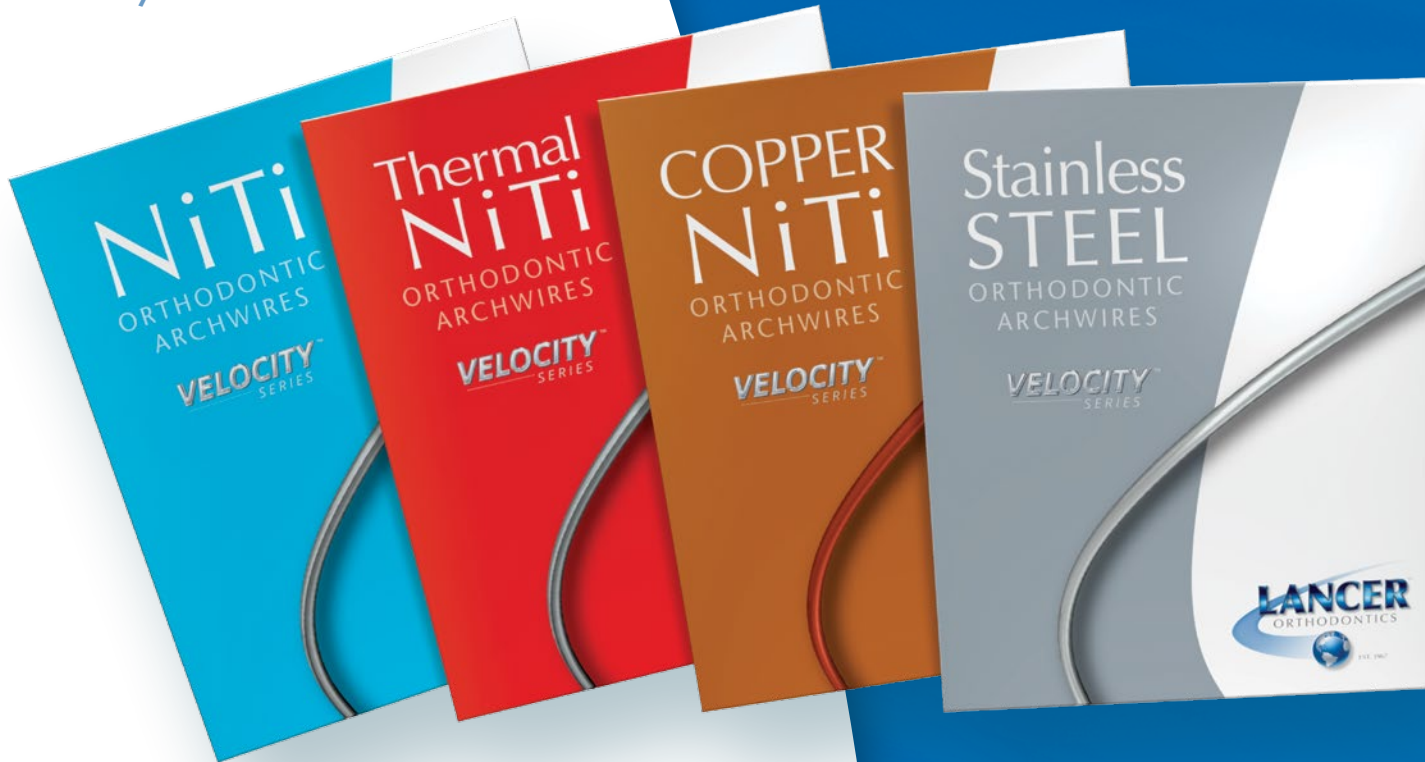
Wire Products



Lancer offers a wide selection of high quality wire products to meet a variety of clinical needs.

Velocity™ Wire Series

Velocity is a comprehensive wire series manufactured from the most reliable and tested materials. Each wire is polished to an unsurpassed smoothness to reduce friction and provide the movement necessary for effective treatments.



Velocity Wires

	NiTi - Trueform		Thermal - Trueform		Copper NiTi - Universal		Stainless Steel - Trueform	
	Upper	Lower	Upper	Lower	Universal	w/ Stop	Upper	Lower
0.012	50TL-012	50TU-012	54TU-012	54TL-012			51TU-012	51TL-012
0.013					52UN-013	52UN-013S		
0.014	50TL-014	50TU-014	54TU-014	54TL-014	52UN-014	52UN-014S	51TU-014	51TL-014
0.016	50TU-016	50TL-016	54TU-016	54TL-016	52UN-016	52UN-016S	51TU-016	51TL-016
0.018	50TU-018	50TL-018	54TU-018	54TL-018	52UN-018	52UN-018S	51TU-018	51TL-018
16x16	50TL-1616	50TU-1616	54TU-1616	54TL-1616	52UN-1622	52UN-1622S	51TU-1616	51TL-1616
16x22	50TU-1622	50TL-1622	54TU-1622	54TL-1622	52UN-1622	52UN-1622S	51TU-1622	51TL-1622
17x25	50TU-1725	50TL-1725	54TU-1725	54TL-1725	52UN-1725	52UN-1725S	51TU-1725	51TL-1725
18x25	50TU-1825	50TL-1825	54TU-1825	54TL-1825	52UN-1825	52UN-1825S	51TU-1825	51TL-1825
19x25	50TL-1925	50TU-1925	54TU-1925	54TL-1925	52UN-1925	52UN-1925S	51TU-1925	51TL-1925

Our nickel titanium, stainless steel, and multi-strand wires are precisely designed and manufactured for maximum effectiveness during treatment.



Titanal Wires				
	Classic Lancer - Fr Arch		Titanal - Full Form	
	Upper	Lower	Upper	Lower
0.016	539-216	539-316	517-216	517-316
0.018	539-218	539-318	517-218	517-318
16x22	539-262	539-362	517-262	517-362
17x25	539-264	539-364	517-264	517-364
18x25	539-266	539-366	517-266	517-366

Lancer Classic and Classic Titanal™ Wires

Superelastic and highly resilient with excellent stored energy, Titanal Nickel Titanium Wires have 25% the stiffness of like-size stainless steel at full activation. Lancer's processing creates a highly polished surface to reduce surface friction and improve sliding mechanics. Titanal wires are offered in a variety of arch forms and packaging options.



Velocity Coated Wires				
	Coated NiTi - Trueform		Coated Stainless Steel - Trueform	
	Upper	Lower	Upper	Lower
0.012	53TU-012	53TL-012	55TU-012	55TL-012
0.014	53TU-014	53TL-014	55TU-014	55TL-014
0.016	53TU-016	53TL-016	55TU-016	55TL-016
0.018	53TU-018	53TL-018	55TU-018	55TL-018
16x16	53TU-1616	53TL-1616	55TU-1616	55TL-1616
16x22	53TU-1622	53TL-1622	55TU-1622	55TL-1622
17x25	53TU-1725	53TL-1725	55TU-1725	55TL-1725
18x25	53TU-1825	53TL-1825	55TU-1825	55TL-1825
19x25	53TU-1925	53TL-1925	55TU-1925	55TL-1925

Products shown are a small sample of our full lines. Contact Lancer at 800-854-2896 to find the items you need today.

Elastomerics

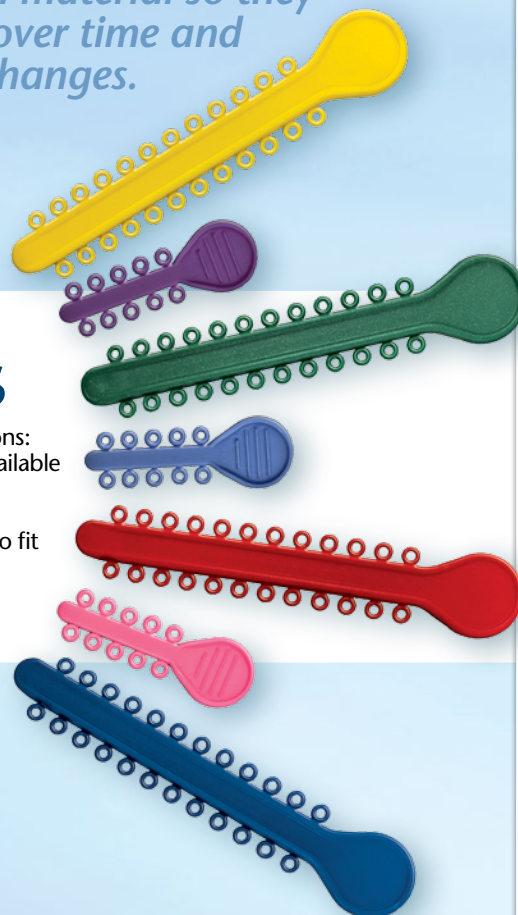
Velocity™ Elastomerics

Velocity™ Ties and Velocity™ Chain are made in the USA from optimum material so they maintain their elasticity over time and do not require frequent changes.

Velocity™ Ties

Velocity™ Ties are available in two variations: Patient Sticks and Arch Sticks. They are available in 50 vibrant colors.

The diameter of each ring is .120 – sized to fit any type of bracket.

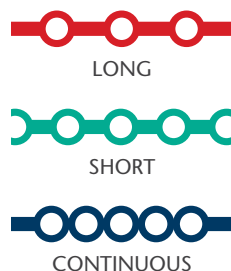


Color Chart

Clear	Silver	Black	Red	Blue	Orange	Yellow	Green	Fuchsia	Purple
Teal	Sky Blue	Hot Pink	Lt. Green	Lt. Pink	Met. Green	Met. Purple	Bright Red	Fluorescent Green	Fluorescent Pink
Emerald Green	Ocean Blue	Tooth Color	Aqua	Cobalt Blue	Dark Green	White	Lt. Blue	Burgundy	Watermelon
Met. Gold	Lime	Violet	Pearl Watermelon	Tangerine	Pearl	Grape	Aquamarine	Met. Ocean Blue	Lilac
Navy	Dark Gray	Sparkle Blue	Sparkle Green	Sparkle Red	Periwinkle	Lime Pearl	Violet Pearl	Br. Red Pearl	Blue Pearl

Velocity Ligature Ties - 1M/PK

	Ties	Short Ties
Assorted	ELT-00	EST-00
Clear	ELT-01	EST-01
Silver	ELT-02	EST-02
White	ELT-03	EST-03
Black	ELT-04	EST-04
Red	ELT-05	EST-05
Hot Pink	ELT-06	EST-06
Light Pink	ELT-07	EST-07
Green	ELT-08	EST-08
Light Green	ELT-09	EST-09
Dark Green	ELT-10	EST-10
Blue	ELT-11	EST-11
Sky Blue	ELT-12	EST-12
Light Blue	ELT-13	EST-13
Cobalt Blue	ELT-14	EST-14
Orange	ELT-15	EST-15
Yellow	ELT-16	EST-16
Purple	ELT-17	EST-17
Fuschia	ELT-18	EST-18
Teal	ELT-19	EST-19
Aqua	ELT-20	EST-20
Met Green	ELT-21	EST-21
Bright Red	ELT-22	EST-22
Fluor Green	ELT-23	EST-23
Fluor Pink	ELT-24	EST-24
Emerald Green	ELT-25	EST-25
Tooth Color	ELT-26	EST-26
Met Gold	ELT-27	EST-27
Burgundy	ELT-28	EST-28
Pearl	ELT-29	EST-29
Aquamarine	ELT-30	EST-30
Lime	ELT-31	EST-31
Ocean Blue	ELT-32	EST-32
Watermelon	ELT-33	EST-33
Tangerine	ELT-34	EST-34
Violet	ELT-35	EST-35
Pearl Watermelon	ELT-36	EST-36
Grape	ELT-37	EST-37
Met Ocean Blue	ELT-38	EST-38
Lilac	ELT-39	EST-39
Navy	ELT-40	EST-40
Dark Gray	ELT-41	EST-41
Sparkle Blue	ELT-42	EST-42
Sparkle Green	ELT-43	EST-43
Sparkle Red	ELT-44	EST-44
Periwinkle	ELT-45	EST-45
Lime Pearl	ELT-46	EST-46
Violet Pearl	ELT-47	EST-47
Bright Red Pearl	ELT-48	EST-48
Blue Pearl	ELT-49	EST-49



Velocity™ Chain

Velocity™ Chain comes in 47 vibrant colors (sparkle colors not available in chain) and 3 sizes: Long, Short and Continuous.

Each spool contains 15 feet of chain and can be easily accessed by placing the spools in Lancer's chain dispenser.



Spool Dispenser

Lancer's Spool Dispenser offers big storage at a compact size. It holds up to 13 spools!

The convenient dispenser can house Chain Elastic, Coil Springs and Tissue Guard.

Velocity Chain

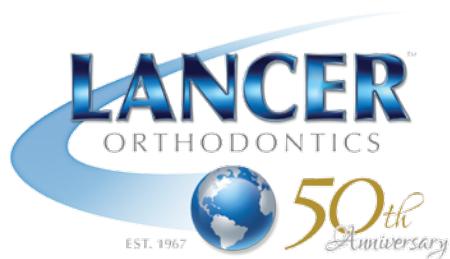
	Short	Long	Continuous
Clear	ECS-01	ECL-01	ECC-01
Silver	ECS-02	ECL-02	ECC-02
White	ECS-03	ECL-03	ECC-03
Black	ECS-04	ECL-04	ECC-04
Red	ECS-05	ECL-05	ECC-05
Hot Pink	ECS-06	ECL-06	ECC-06
Light Pink	ECS-07	ECL-07	ECC-07
Green	ECS-08	ECL-08	ECC-08
Light Green	ECS-09	ECL-09	ECC-09
Dark Green	ECS-10	ECL-10	ECC-10
Blue	ECS-11	ECL-11	ECC-11
Sky Blue	ECS-12	ECL-12	ECC-12
Light Blue	ECS-13	ECL-13	ECC-13
Cobalt Blue	ECS-14	ECL-14	ECC-14
Orange	ECS-15	ECL-15	ECC-15
Yellow	ECS-16	ECL-16	ECC-16
Purple	ECS-17	ECL-17	ECC-17
Fuschia	ECS-18	ECL-18	ECC-18
Teal	ECS-19	ECL-19	ECC-19
Aqua	ECS-20	ECL-20	ECC-20
Met Green	ECS-21	ECL-21	ECC-21
Bright Red	ECS-22	ECL-22	ECC-22
Fluor Green	ECS-23	ECL-23	ECC-23
Fluor Pink	ECS-24	ECL-24	ECC-24
Emerald Green	ECS-25	ECL-25	ECC-25
Tooth Color	ECS-26	ECL-26	ECC-26
Met Gold	ECS-27	ECL-27	ECC-27
Burgundy	ECS-28	ECL-28	ECC-28
Pearl	ECS-29	ECL-29	ECC-29
Aquamarine	ECS-30	ECL-30	ECC-30
Lime	ECS-31	ECL-31	ECC-31
Ocean Blue	ECS-32	ECL-32	ECC-32
Watermelon	ECS-33	ECL-33	ECC-33
Tangerine	ECS-34	ECL-34	ECC-34
Violet	ECS-35	ECL-35	ECC-35
Pearl Watermelon	ECS-36	ECL-36	ECC-36
Grape	ECS-37	ECL-37	ECC-37
Met Ocean Blue	ECS-38	ECL-38	ECC-38
Lilac	ECS-39	ECL-39	ECC-39
Navy	ECS-40	ECL-40	ECC-40
Dark Gray	ECS-41	ECL-41	ECC-41
Periwinkle	ECS-45	ECL-45	ECC-45
Lime Pearl	ECS-46	ECL-46	ECC-46
Violet Pearl	ECS-47	ECL-47	ECC-47
Bright Red Pearl	ECS-48	ECL-48	ECC-48
Blue Pearl	ECS-49	ECL-49	ECC-49



(800) 854-2896

www.lancerortho.com

Products shown are a small sample of our full lines. Contact us to find the items you need.



Blaze™ Curing Light

- **Added Feature:** Caries detection light
- Colorful, ergonomic handle design
- Color choices: Grass Green, Pink, Purple, Blue and Black
- A full charge will provide more than 200 applications
- Three working modes: full power, ramping-up and pulse
- Variable time settings: from 5 seconds to 40 seconds
- Long stand-by time, as long as six months
- Wave length: 420nm - 480nm
- Light intensity: 1,600 mW/cm2 to 1,800 mW/cm2
- 1 year warranty



Blaze Curing Light			
Black	ECL1-BK	Green	ECL1-GR
Purple	ECL1-PU	Pink	ECL1-PI
Blue	ECL1-BL	Replacement Tip	ECL1-R1

One Step Adhesive

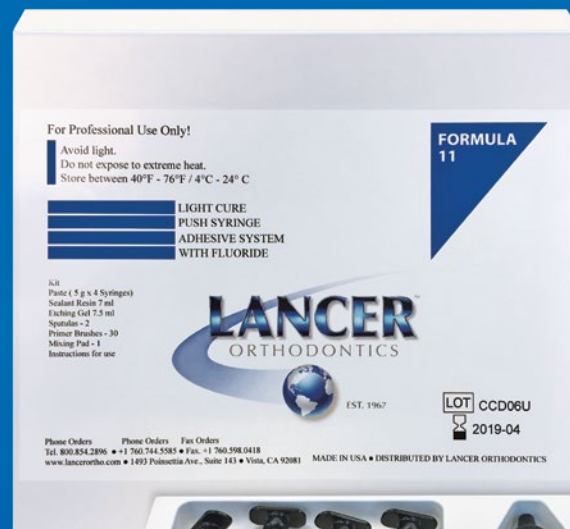
Lancer's unique composite resin system is perfect for bonding plastic, metal, or porcelain orthodontic brackets to etched enamel. The paste features a tacky composite viscosity that allows it to flow easily, helping to eliminate bracket flotation during bonding. The Catalyst Resin/Paste system sets on contact, while the primer helps to seal the etched enamel. The cohesive strength of the adhesive is greater than the bond to the tooth, allowing for one-piece removal after treatment.

FORMULA 2

One Step Syringe –KIT

810 – 502

Contains:
 Paste 20 g (5 g x 4 Syringes)
 Primer 12 ml
 Etching Gel 7.5 ml
 Spatulas x 2
 Primer Brushes x 30
 Mixing Pads x 2



esives

Light Activated Adhesive

Lancer's light-activated composite resin system is used for bonding plastic, metal, or porcelain orthodontic brackets to etched enamel. The paste features a tacky viscosity that flows evenly and eliminates bracket flotation. The light activated bonding resin/paste system sets on demand, while the primer helps to seal the etched enamel. The cohesive strength of the adhesive is greater than the bond to the tooth, allowing for one-piece removal after treatment, with no enamel scarring. Mixing is not required, saving valuable chair time.



FORMULA 10 LIGHT CURE

Light Cure Patient Cartridges -KIT

810-510

Contains:
Paste 20 g (0.35 g X 57 Cartridges)
Resin 6 cc
Etching Gel 24 g
Spatulas x 2
Primer Brushes x 30
Mixing Pads x 2



FORMULA 14

Automix Dual Cure Glass Ionomer Band Cement

Dual Cure Syringe - KIT

810-F14

Contains:
Paste 40 g (10 g x 4 Syringes)
Mixing Tips
Mixing Pad



FORMULA 11 LIGHT CURE

Light Cure Syringe - KIT

810-F11

Contains:
Paste 20 g (5 g x 4 Syringes)
Primer 7 ml
Etching Gel 7.5 ml
Spatulas x 2
Primer Brushes x 30
Mixing Pad

Dual Cure Glass Ionomer Band Cement

Lancer's dual cure composite resin cement is ideally suited for cementing metal molar bands by creating a chemical bond between the tooth structure and the band. The cement is pre-mixed, and has no strong odor or aftertaste. It can be light cured to immediately set the band in place. Without light activation, a complete set is achieved in five minutes. The cement contains fluoride for added tooth protection, and is easily dispensed from either economical screw syringes or in the smart automix system.

Products shown are a small sample of our full lines. Contact Lancer at 800-854-2896 to find the items you need today.

Orthodontic Pliers

BIRD BEAK
PLIER

652-009

STEALTH

ORTHO INSTRUMENTATION

Lancer and its partners are continually developing Stealth designs with a focus on practical improvements and enhanced performance to provide you the best value in orthodontic instrumentation.

Constructed from the highest grade surgical stainless steel and the most modern corrosion resistant materials available, Stealth instruments are designed to withstand all approved sterilization procedures. Each Stealth instrument is hand-finished

and hand-buffed by true craftsmen to ensure the finest quality and performance.

Stealth's uniquely effective designs dramatically increase stability while reducing required force. The tips and cutting edges are manufactured from hardened steel or tungsten carbide for increased durability and better cutting performance over a longer period of time. In fact, Stealth's cutting tips will last up to three months without sharpening under normal wire cutting applications.

Stealth instruments come with a three-year warranty that covers normal use against any manufacturing defects on joints and handles, allowing you to experience the Stealth difference with great confidence.

DIRECT BOND
BRACKET
REMOVING
PLIER - ANGLED

652-019

HOW
PLIER

652-113

JARABAK
PLIER

652128

OrthoBox

Lancer's OrthoBox provides a safe and efficient way to handle, carry and sterilize instruments.

- Manufactured of high-quality stainless steel with a rust-resistant anodized aluminum cover
- Can be inserted directly into autoclave
- Hold up to 14 instruments
- 9.85 in x W 5.5 in H 2.4 in, (L 25 cm x W 14 cm x H 6 cm)

DISTAL END SAFETY CUTTER

652-001

DISTAL END SAFETY CUTTER SLIM FLUSH

652-102

HARD WIRE CUTTER

652-006

PIN & LIGATURE CUTTER

652-003

WEINGART UTILITY PLIER

652-118



OrthoBox Plier Box

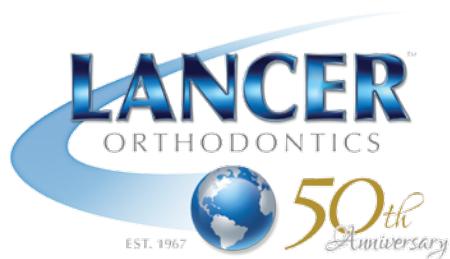
Cover Color	Part #
Blue	626-323
Red	626-324
Green	626-325
Yellow	626-326



(800) 854-2896
www.lancerortho.com

Products shown are a small sample of our full lines. Contact us to find the items you need.

Expanders



Philosophy 1

Due to the design of its arm and the single expansion mechanism, the dimension of the screw body does not change during treatment. Innovative design and Micro-Mechanical technology allow Philosophy 1 RPE to fit very close to the palate. This means it is much closer to the center of resistance of the palatal suture and provides optimal transfer of expansion force. Thanks to its design and manufacturing technology, Philosophy 1 is also applied parallel to the palate.

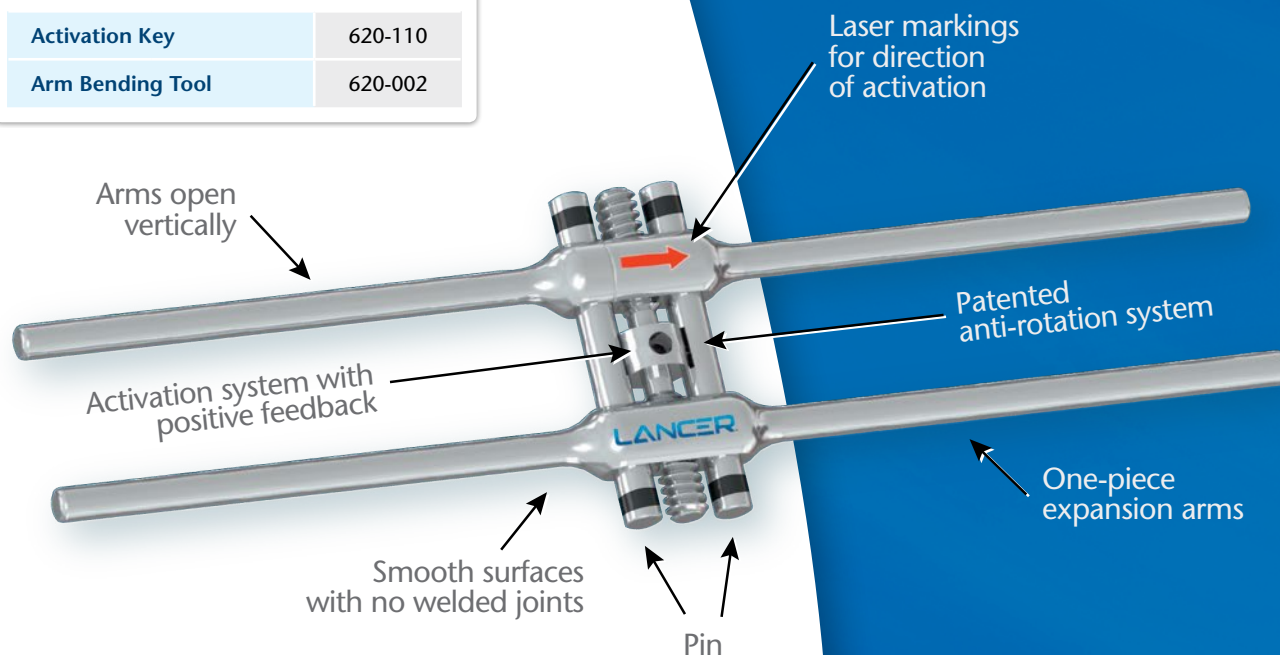
Malleable in the laboratory and strong in the mouth, the special steel alloy has unique bio-mechanical properties that facilitate forming the device while ensuring dimensional stability in the mouth during treatment.

RPE Philosophy 1

Expansion	Screw Body	Part #
4mm	8mm	620-004
6mm	10mm	620-006
8mm	12.5mm	620-008
10mm	14.5mm	620-010
13mm	18mm	620-013

Accessories

	Part #
Activation Key	620-110
Arm Bending Tool	620-002



*Philosophy 1
redefines low profile*



Philosophy 1

8mm
Expansion

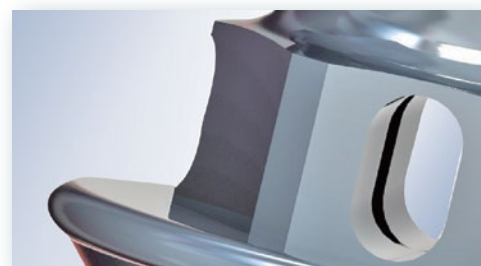
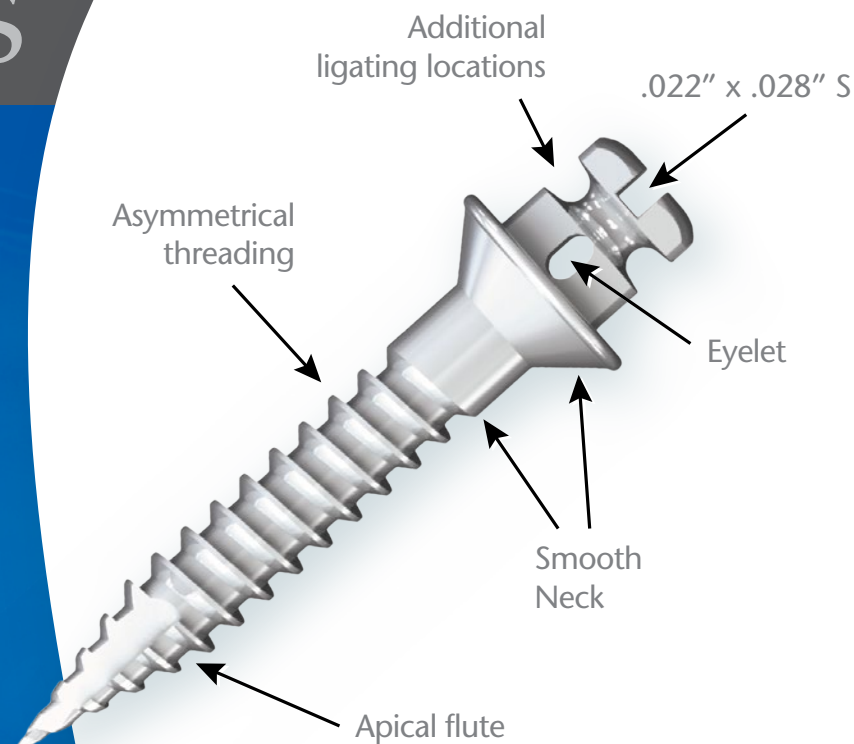


Traditional Expander

Miniscrews

Storm Miniscrew

The Storm Mini Screw is a combination of Lancer's manufacturing technology and the clinical experience of a team of orthodontists specialized in skeletal anchorage. Storm is the easiest and most effective solution for the common needs of anchorage in orthodontics. Easy to insert and to remove, the Storm Miniscrew provides the best and simplest answer to intraoral anchorage needs.



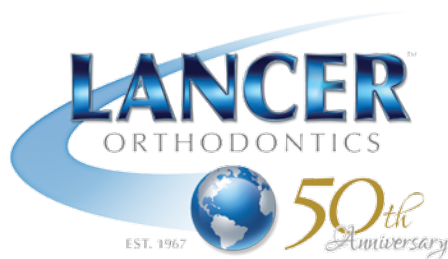
Storm Miniscrews & Accessories

	Diameter	Intraosseous Length	Neck Length	Total Length	Part #
	1.5mm	8mm	1.5mm	12.38mm	SAMS12
	2mm	10mm	1.5mm	14.38mm	SAMS14
	2mm	10mm	3mm	15.88mm	SAMS15
Surgical Kit					SASKIT
Manual Screwdriver					SASKIT-R1
Connector Handpiece 20mm					SASKIT-R2
Connector Handpiece 25mm					SASKIT-R3
Bur Dia. 1.1mm/L7mm					SASKIT-R4
Bur Dia. 1.4mm/L8mm					SASKIT-R5
Handle Driver					SASKIT-R6



(800) 854-2896
www.lancerortho.com

Products shown are a small sample of our full lines. Contact us to find the items you need.



HOW TO ORDER

PHONE ORDERS:

Toll free within the USA and Canada
1-800-854-2896, or dial +1 (760) 744-5585.

- Our phone lines are open Monday through Friday from 8:00 a.m. to 4:30 p.m. (Pacific US time)
- Various languages spoken for your assistance

FAX ORDERS:

Fax your order to
+1 (760) 598-0418

EMAIL ORDERS:

info@lancerortho.com

MAIL ORDERS:

Lancer Orthodontics
Vista Technology Center
1493 Poinsettia Ave., #143
Vista, California 92081 USA

PAYMENT OPTIONS

- **All payments must be sent to our payment processing address:**
Lancer Orthodontics
Vista Technology Center
1493 Poinsettia Ave., #143
Vista, California 92081 USA
- Freight charges vary and will be added to your order. Duties and taxes will be due upon delivery
- **Minimum Order Value: \$50.00**
- **Pre-payment via Master Card or Visa warrants a 4% discount on product total**
- We accept the following major credit cards: MasterCard, Visa, American Express
- Personal and business checks are accepted
- Wire transfers
- Certified and cashier's checks
- Cash payments will be accepted in person at our headquarters or at trade shows
- Open accounts may be arranged. Please call your sales representative for information. Open accounts will receive an invoice shortly after shipment. Payments on open accounts are due within account terms. Any invoice outstanding after account terms will be considered past due, and will be subject to service charges of one and one-half per cent (1 ½%) per month – eighteen per cent (18%) per year. Delays in shipments may occur on accounts that are past due

CONTACT LANCER

Customer Service: +1 (760) 744-5585 ext. 2729
Regulatory Affairs: +1 (760) 744-5585 ext. 2845
Accounting: +1 (760) 744-5585 ext. 2706 or 2709
Accounting Fax: +1 (877) 909-8035
Accounting Email: AR@lancerortho.com

PRICING AND POLICIES

We are constantly engaging in research to improve our quality and design. Therefore, Lancer reserves the right to improve, modify, or discontinue production at any time, or to change design or prices without prior notice of obligation. All prices are in US funds and are subject to change without notice. Purchaser assumes all risk and liability resulting from the use of these products. In the event of any claimed defect, Lancer's sole responsibility is limited to the replacement of the material, or at Lancer's option, issuing credit for the purchase

price. Lancer will not be responsible for other claims for incidental and consequential damages. Any and all implied warranties of merchantability or fitness for any particular purpose or use are waived and excluded. Written notice of claimed defects must be received by Lancer at Lancer Orthodontics, Vista Technology Center, 1493 Poinsettia Ave., #143, Vista, California 92081 USA, not exceeding one year from date of delivery of merchandise.

RETURN AND CREDIT POLICY

To help process your return quickly, please note our following policy:

- Items must be returned unused and in their original container or package, in clean and salable condition and must be approved by Lancer customer service.
- A copy of the invoice or invoice number and a description of the problem must accompany all returns.
- Products may be returned for credit of the purchase price within 30 days of date of shipment.
- At the option of Lancer, certain products returned for credit may be subject to a 20% restocking charge.
- All returns must be shipped postage paid and insured.
- Shortages or errors in shipments must be reported within 15 days of invoice date to issue credit (if applicable).

The following products are not returnable

- Custom made and those produced on special order
- All pre-welded attachments including standard, special placement, angulations and modified or incomplete materials
- Hazardous items and chemical products
- Expired items
- Certain close-out and sale merchandise

SHIPPING OPTIONS

All domestic and international orders are shipped via Federal Express or customer's personal UPS account unless a specific carrier is preferred and approved prior to ordering. Alternate shipping services are available including express or overnight shipping where available – please call for more information.

All orders are shipped FOB point of origin. All shipping and handling charges are the sole responsibility of the purchaser. In the event a purchaser requests a delivery service with which Lancer does not have a service contract, the shipment will be made collect and charged to the purchaser's account with the specific service.

WARNING

A small percentage of the population is known to be allergic to nickel and/or chromium. Many of our products are made of nickel titanium and/or stainless steel. Nickel titanium contains nickel, and stainless steel contains nickel and chromium. Also, cobalt chromium contains chromium and nickel. Please advise patient to consult a physician if an allergic reaction occurs.

Manufacturing

Lancer Orthodontics designs and manufactures its stainless steel devices under a certified quality management system using a variety of manufacturing techniques to ensure the highest quality and functionality.

METAL INJECTION MOLDING (MIM)

MIM technology offers a manufacturing capability for producing small, highly complex parts with tolerances as small as 0.0005 inches. The MIM process utilizes fine metal powders (typically less than 20 micrometers) which are custom formulated with a binder to create a feedstock which is granulated and then fed into the cavity of a conventional injection molding machine..

The advantages of the MIM process lie in its capability to produce mechanical properties nearly equivalent to wrought materials, with good dimensional tolerance control. Metal injection molded parts offer a nearly unlimited shape and geometric-feature capability, with high production rates possible through the use of multi-cavity tooling.

Lancer has taken MIM manufacturing one step further... robotics. Using the latest in robotic MIM manufacturing technology, Lancer's brackets are created to meet exact design specifications for a robust, high-quality, dimensionally accurate appliance.

LOST WAX CASTING

Lancer is one of the few remaining orthodontic manufacturers to perform a traditional lost-wax casing process to manufacture metal orthodontic brackets. The craftsmanship involved in this centuries-old process has been handed down for generations, and results in precisely-constructed devices that perform as intended for maximum treatment results.

First, Lancer's skilled craftsmen assemble plastic injection molded bracket patterns into a "stem and leaf" tree configuration. These "trees" are loaded into a casing crucible, and an investment slurry is then poured into the crucible and allowed to harden around the bracket patterns. After the slurry has hardened, the crucible is heated to allow the plastic patterns to melt away to leave a series of hollow bracket cavities inside the hardened slurry.

The crucible is then loaded into a centrifuge machine, where a stainless steel bar is heated to 2100oF and forced into the hollow bracket cavities to create the metal bracket.

MILLING

Lancer uses a precision milling process on each bracket to form exact archwire slots. This allows for full expression of the prescription by creating a dimensionally accurate, highly functional bracket each and every time.

SAND BLASTING

Lancer uses sand blasting technology to individually hand-etch the inner diameter of each metal band to ensure a rough surface for proper adhesion to the tooth. Each band is precisely stretched to the correct anatomy to facilitate a "snap-tight" fit.

WELDING

Our skilled, highly experienced team of welding operators specializes in hand-welding a variety of orthodontic components, including tack welding foil mesh bases to our two-piece brackets, and custom welding complicated assemblies involving multiple components to meet our customers' exact specifications.



*Thank you
for your Business!*

IN THE MID-1960S, ORTHODONTIC TREATMENT WAS A RUDIMENTARY AND CUMBERSOME PRACTICE, LIMITED BY ANTIQUATED PRODUCT DESIGNS AND TECHNOLOGIES.

Recognizing the demand for more effective solutions, a team of experienced industry leaders founded Lancer Orthodontics in 1967 to design, manufacture and distribute high-quality, affordable orthodontic appliances throughout the world.

With a focus on developing innovative appliances that simplified treatments while providing superior results, Lancer Orthodontics became the first orthodontic manufacturing company to produce ceramic aesthetic brackets and pre-formed molar bands. These products quickly became industry standards, and Lancer emerged as a respected industry leader with a reputation for producing contemporary new products that advance the science of orthodontics.

Today, our popular Titanal, Praxis, Intrigue and Velocity product lines stand as the proud centerpieces of 50 years of hard work, dedication and service to our customers. The Lancer brand is recognized and respected throughout the world – a distinguished reputation built on a continuing foundation of quality products at affordable prices, backed by exceptional customer care.

At Lancer, our passion for effective orthodontic solutions results in beautiful, radiant smiles from doctors and patients on a daily basis. For the past 50 years, our products have made a real difference in the everyday lives of millions of people. Our mission, today, is to continue to make our founders' vision a reality for another 50 years.

LANCER
ORTHODONTICS



EST. 1967

*50th
Anniversary*

(800) 854-2896
www.lancerortho.com

Toll Free: 1 (800) 854-2896 · Direct Line: +1 (760) 744-5585 · Fax: +1 (760) 598-0418
Vista Technology Center · 1493 Poinsettia Ave., Suite 143 · Vista, CA 92081 (U.S.A.)